



AIMQUALIFICATIONS

Handbook
for centre staff



AIM Qualifications

Suite of General Religious Education

Version 7 - April 2023

“ I would like to convey my thanks to you all at AIM for the support and guidance you have provided during our first year as a training centre. I am aware we have asked a lot of questions and sent a lot of emails and you have dealt with every query swiftly and efficiently combined with a lot of patience.

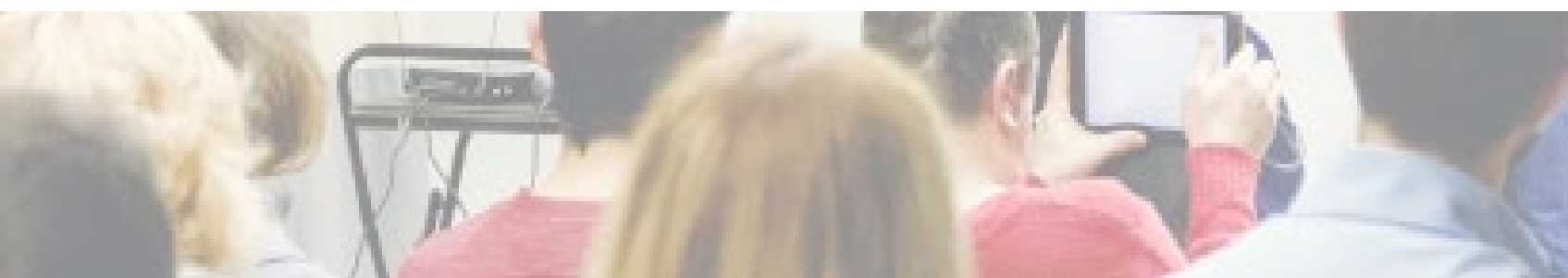
It has been a roller coaster of a year setting up everything from scratch but it has been made easier by having access to you all.

Carol Harmston, AIM Centre



Document Version History

Version Number	Date	Description
4	23/11/2018	Update to TQT value and remove credit AIM Awards Entry Level Qualifications in General Religious Education (Entry 3) (Page 7) Credits removed AIM Qualifications Entry Level Award in General Religious Education (Entry 3) (Page 12)
5	September 2019	Rebrand - 'AIM Awards' changed to 'AIM Qualifications' Qualification family added to qualification details grid (pages 7-9)
6	May 2022	Review date updated to 31/12/2023 for Entry Level Award in General Religious Education (Entry 3) - 600/5987/4
7	April 2023	<ul style="list-style-type: none"> - Withdrawal dates added for Level 1 Award in General Religious Education - Operational end date: 30/09/2023 - Certification end date: 30/09/2026



Contents

Introduction	5
SECTION ONE - QUALIFICATION OVERVIEW	
About these Qualifications	7
SECTION TWO - QUALIFICATION STRUCTURE	
Qualification Structure and Components	12
SECTION THREE - ASSESSMENT	
Centre Staff Requirements	14
How these Qualifications are Assessed	15
SECTION FOUR - OPERATIONAL GUIDANCE	
Offering these Qualifications	17
Approval to Offer these Qualifications	17
Registration and Certification	17
SECTION FIVE - APPENDICES	
A Guide to Assessing AIM Qualifications	19



Introduction

Welcome to the AIM Qualifications Suite of General Religious Education Qualifications Handbook. This Handbook contains everything you need to know about these qualifications and is intended for Tutors, Assessors, Internal Verifiers and other staff involved with the planning, delivery and assessment:

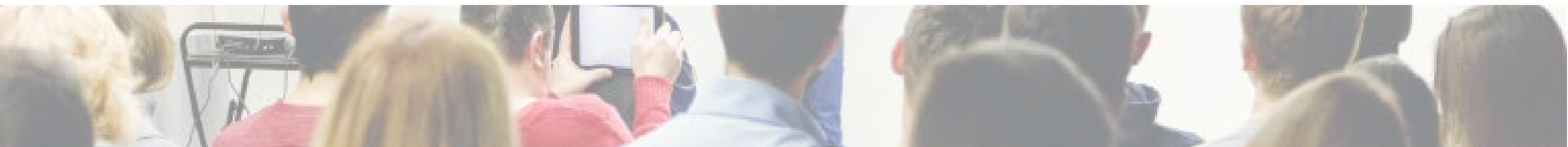
- AIM Qualifications Entry Level Award in General Religious Education (Entry 3)
- AIM Qualifications Level 1 Award in General Religious Education - WITHDRAWN
- AIM Qualifications Level 2 Award in General Religious Education - WITHDRAWN

This is a live document and as such will be updated when required. You will be informed via email when changes are made and it is your responsibility to ensure the most up-to-date version of the Qualification Handbook is in use.

About Us

AIM Qualifications is a national and international Awarding Organisation. We offer a large number of regulated qualifications at different levels and in a wide range of subject areas, Access to Higher Education Diplomas and End Point Assessments. Our products are flexible enough to be delivered in a range of settings, from small providers to large colleges and in the workplace both nationally and internationally. We pride ourselves on offering the best possible customer service, and are always on hand to help if you have any questions. Our organisational structure and business processes enable us to be able to respond quickly to the needs of customers to develop new products that meet their specific needs.

Qualification Overview



About these Qualifications

Please note the following qualifications in this suite will be withdrawn from any new learner registrations on 31/12/2018:
Level 1 Award in General Religious Education
Level 2 Award in General Religious Education

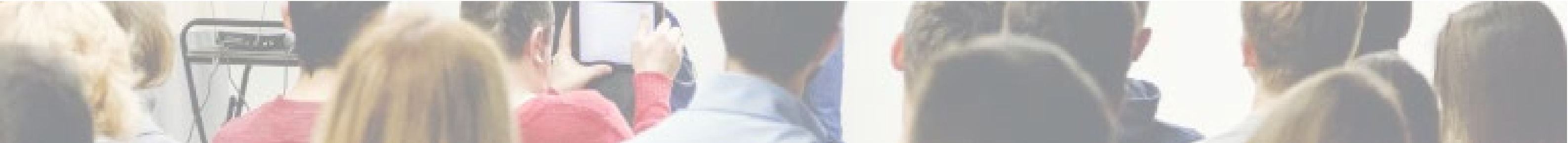
The Suite of AIM Qualifications General Religious Education Qualifications is designed to develop the religious literacy of learners. It enables learners to identify diverse religious beliefs and look at their own position on faith through thinking about their experiences in life and values in contemporary culture.

These qualifications are suitable for people from any faith (or none) and are appropriate for learners of all ages; at school, in college, in the workplace and in everyday living. They support equality and diversity as well as respect, tolerance and good citizenship.

Qualification Details

Qualification	
AIM Qualifications Entry Level Award in General Religious Education (Entry 3)	
Qualification Family	Flexibilities
Assessment	Internally set, internally marked and externally verified portfolio of evidence
Grading	Assessment is competent / not competent. There is no grading.
Progression Opportunities	Progression to other vocational or academic qualifications.
Geographical Coverage	England
Operational Start Date	01/07/2012
Review Date	31/12/2023
Sector	10.4 Theology and Religious Studies
Qualification Number	600/5987/4
Learning Aim Reference	60059874
Guided Learning Hours (GLH)	30
Total Qualification Time (TQT)	30
Minimum Learner Age	N/A
Rules of Combination	To achieve this qualification learners must complete the single essential component.

Qualification	
AIM Qualifications Level 1 Award in General Religious Education WITHDRAWING 30/09/2023	
Qualification Family	Flexibilities
Assessment	Internally set, internally marked and externally verified portfolio of evidence
Grading	Assessment is competent / not competent. There is no grading.
Progression Opportunities	Progression to other vocational or academic qualifications.
Geographical Coverage	England
Operational Start Date	01/07/2012
Operational End Date	30th September 2023
Certification End Date	30th September 2026
Sector	10.4 Theology and Religious Studies
Qualification Number	600/5948/5
Learning Aim Reference	60059485
Credit Value	3
Guided Learning Hours (GLH)	30
Total Qualification Time (TQT)	35
Minimum Learner Age	N/A
Rules of Combination	At all levels, learners must complete 3 credits from the single essential component.



Qualification Details

Qualification	
AIM Qualifications Level 2 Award in General Religious Education	
Qualification Family	Flexibilities
Assessment	Internally set, internally marked and externally verified portfolio of evidence
Grading	Assessment is competent / not competent. There is no grading.
Progression Opportunities	Progression to other vocational or academic qualifications.
Geographical Coverage	England
Operational Start Date	01/07/2012
Operational End Date	31/12/2018
Certification End Date	31/12/2021
Sector	10.4 Theology and Religious Studies
Qualification Number	600/5949/7
Learning Aim Reference	60059497
Credit Value	3
Guided Learning Hours (GLH)	30
Total Qualification Time (TQT)	36
Minimum Learner Age	N/A
Rules of Combination	At all levels, learners must complete 3 credits from the single essential component.

Total Qualification Time and Guided Learning Hours

Total Qualification Time (TQT) is the number of notional hours it takes a typical learner to achieve the full qualification and is made up of two elements:

- the minimum number of Qualification Guided Learning Hours (GLH) - the number of Tutor-led contact hours
- the number of hours spent on preparation, studying and the assessment that is non-guided

For example, the number of tutor-led contact hours (GLH) for a qualification is 30 and the number of hours spent by the learner (non-GLH) on preparation, studying and the assessment is 6 hours. Therefore the Total Qualification Time (TQT) for the qualification is 36 hours.

Progression Opportunities

Learners from these qualifications can progress onto other vocational or academic qualifications.

Entry Guidance

There are no specific entry requirements for this qualification.

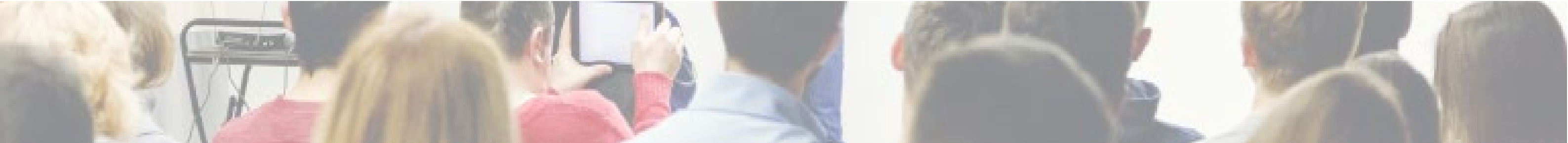
Qualification Dates

The qualification review date is the date by which we will have carried out a review of the qualification. We work with sector representatives to make any changes necessary to meet sector needs and to reflect recent developments. In most cases, we'll extend the qualification and set a new review date. If we make a decision to withdraw a qualification, we'll set an operational end date.

We will post information relating to changes or extensions to qualifications on our website and centres approved to offer the qualification will be kept updated. The certification end date will be three years from the operational end date.

Resource Requirements

There are no specific resource requirements for these qualifications. You must ensure that your centre has appropriate resources in place to deliver the component(s) in this qualification.



Qualification Structure and Components

Section Two

Qualification Structure and Components

This section details the rules of combinations for these qualifications. Select the component title to view the component details.

Rules of combination for: AIM Qualifications Entry Level Award in General Religious Education (Entry 3)			
To achieve this qualification learners must complete the single essential component.			
Component Code	Component Title	Level	GLH
Essential			
F/600/3381	Introduction to General Religious Education	E3	30

Rules of combination for: Level 1 Award in General Religious Education WITHDRAWING 30/09/2023				
Learners must successfully achieve 3 credits from the single essential component to achieve this qualification.				
Component Code	Component Title	Level	Credit Value	GLH
Essential				
R/600/2638	General Religious Education	One	3	30

Rules of combination for: AIM Qualifications Level 2 Award in General Religious Education (EXPIRING 31/12/2018)				
Learners must successfully achieve the single essential component to achieve this qualification.				
Component Code	Component Title	Level	Credit Value	GLH
Essential				
D/600/2898	General Religious Education	Two	3	30



Section Three

Assessment

Centre Staff Requirements

As an Awarding Organisation, we require that:

Tutors **have relevant teaching experience and/or a qualification, and experience and/or a qualification in the relevant subject area.** Suitable teaching qualifications include:

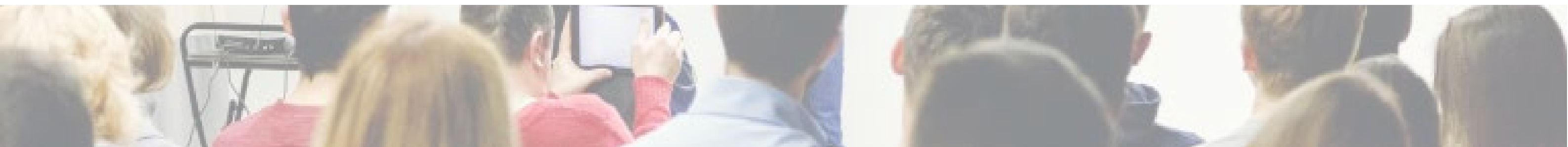
- Level 3 or 4 Preparing to Teach in the Lifelong Learning Sector (PTLLS) or above
- Level 3 Education and Training or above
- Diploma or Certificate in Education
- Bachelors or Masters Degree in Education

Assessors have an assessor qualification or evidence of recent relevant experience. Suitable assessor qualifications include:

- Level 3 Award in Assessing Competence in the Work Environment
- Level 3 Certificate in Assessing Vocational Achievement
- A1 Assess Candidate Performance using a Range of Methods
- D32 Assess Candidate Performance and D33 Assess Candidate using Differing Sources of Evidence

Internal Verifiers (IV) have an internal verification qualification or evidence of recent relevant experience. Suitable internal verification qualifications include:

- Level 4 Award in Internal Quality Assurance of Assessment Processes and Practice
- Level 4 Certificate in Leading the Internal Quality Assurance of Assessment Processes and Practice
- V1 Conduct Internal Quality Assurance of the Assessment Process
- D34 Internally Verify the Assessment Process

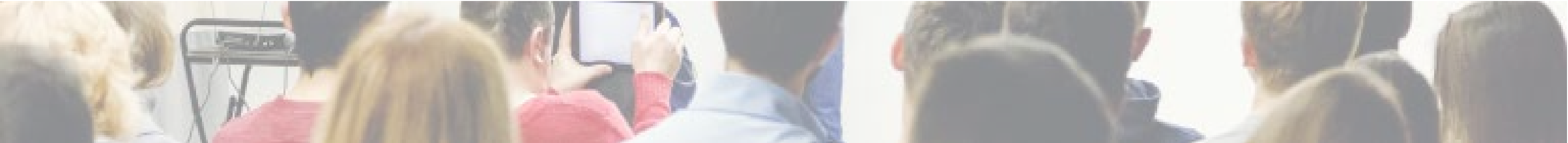


How these Qualifications are Assessed

These qualifications are assessed through an internally set, internally marked and externally verified portfolio of evidence. A summary of the assessment is shown below. Guidance on our expectations is available in 'A Guide to Assessing AIM Qualifications' available on the AIM website (www.aim-group.org.uk).

Components			Set by the centre			Set by AIM		
Component Code	Component Title	Level	Portfolio of evidence	Exam	Practical	Portfolio of evidence	Exam	Practical
F/600/3381	Introduction to General Religious Education	E3	✓	–	–	–	–	–
R/600/2638	General Religious Education	One	✓	–	–	–	–	–
D/600/2898	General Religious Education	Two	✓	–	–	–	–	–

Operational Guidance



Offering these Qualification

Centres wishing to offer this qualification must be an AIM recognised centre. New centres can apply to become a centre using the centre recognition application process on our website (www.aim-group.org.uk).

We can advise centres of the best and most efficient methods for offering this qualification. All procedures for the use of this qualification, including approval, registration of learners, verification and certification will be completed through AIM and all centres will have an allocated customer experience advisor to support them.

Approval to Offer these Qualification

Centres wishing to offer this qualification must complete and submit a Qualification Approval request (found on the AIM website). Some qualifications require centres to have specific resources in place and/ or their assessors/ internal verifiers should hold certain qualifications. Where this is the case, centres must provide evidence of resources/staff qualifications when completing the Qualification Approval request.

Registration and Certification

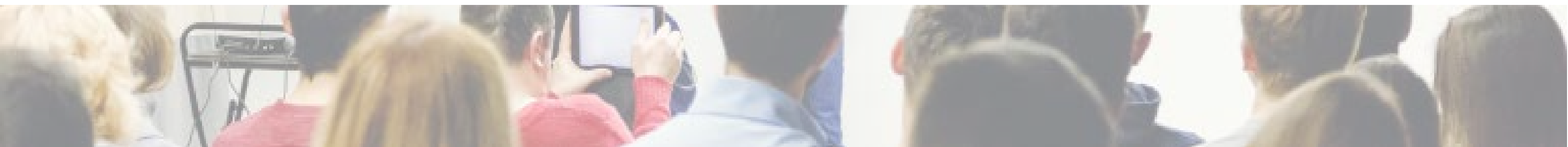
Once your centre has approval to offer a qualification, you will be able to register learners using the AIM portal. Learners must be registered onto the correct qualification via the portal. Centres then select their chosen components.

For all registration and certification processes, please refer to the portal guidance document which can be downloaded from our website (www.aim-group.org.uk). Details of assessment, internal verification and external verification can be found in Appendix 1 - A guide to assessing AIM qualifications of this handbook.

Learners achieving a qualification will be issued with a qualification certificate detailing the achieved qualification and components. Learners who have not achieved a qualification will, on request, be issued with a component certificate detailing the components achieved.

Fees and Charges

The AIM Fees and Charges brochure includes all qualification charges and is available on our website. Please note that registrations will not be processed if centre fees have not been paid.



APPENDICES AND LINKS

Select an appendix from the list below to view the document.

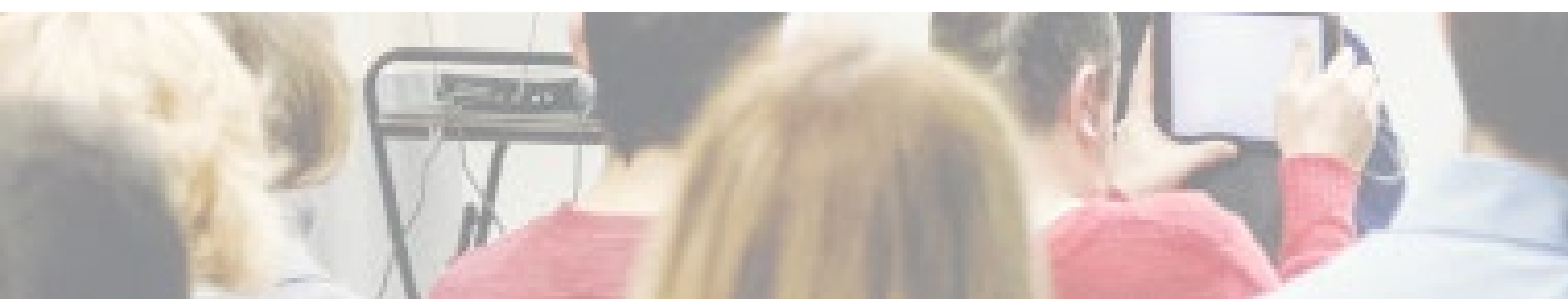
Appendix Name

A Guide to Assessing AIM Qualifications



[Back to Contents](#)

19



+44 (0)1332 341822



enquiries@aim-group.org.uk



www.aim-group.org.uk

AIM Qualifications and Assessment Group
3 Pride Point Drive
Pride Park
Derby
DE24 8BX